



Engine Model Identification for Case-New Holland Construction Equipment

The AERA Technical Committee offers the following information concerning engine model identification for Case-New Holland (CNH) construction equipment. This information is being supplied to help identify which engine is used in various pieces of CNH equipment. Often, the engine identification plate is unreadable or lost due the harsh environment the equipment operates in. Also, more than one type engine may be used in similar pieces of equipment and CNH uses various engine manufacturers.

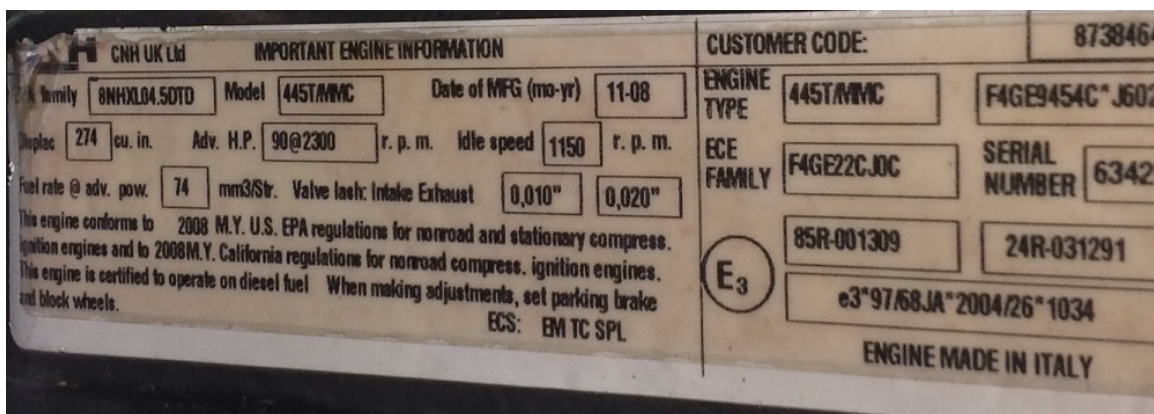


Figure 1. Typical Engine Identification Tag

Model	Rating kW (hp)	Engine Displacement	(Liter)
ARTICULATED TRUCKS			
325	185	(248) Cummins 6CTAA-8.3	8.3L
327	224	(300) Iveco Cursor	10.3L
327B	224	(300) Iveco Cursor	10.3L
330	213 (286)	Cummins QSM	10.8L
330	260 (349)	Iveco Cursor	10.3L
330B	260 (349)	Iveco Cursor	10.3L
335	284 (380)	Iveco Cursor 13	12.9L
335B	306 (410)	Iveco Cursor 13	12.9L
340	318 (426)	Iveco Cursor 13	12.9L
340B	340 (456)	Iveco Cursor 13	12.9L
COMPACT TRACK LOADERS (SSL)			
420CT Series 3	55 (74)	FPT 432T/M3	3.2L
440CT Series 3	67 (89)	NEF 445T/M3	4.5L
445CT	60 (80.5)	NEF 445/M2	4.5L
445CT Series 3	61 (82)	FPT 432T/M3	3.2L
450CT	65 (88)	NEF 445T/M2	4.5L
450CT Series 3	67 (89)	NEF 445T/M3	4.5L

This information is provided from the best available sources. However, AERA does not assume responsibility for data accuracy or consequences of its application. Members and others are not authorized to reproduce or distribute this material in any form, or issue it to their branches, divisions, or subsidiaries, etc. at a different location, without written permission.



Model	Rating kW (hp)	Engine Displacement	(Liter)
COMPACTION EQUIPMENT			
DV201	20 (27)	Deutz F2L1011F	1.7L
DV202	20 (27)	Deutz F2L1011F	1.7L
DV204	27.6 (38)	Deutz F3L1011F	2.3L
SV208	75 (100)	Cummins B4.5-C99	4.5L
SV210	75 (100)	Cummins B4.5-C99	4.5L
SV212	101 (135)	Cummins QSB5.9-C155	5.9L
SV212	110 (148)	Cummins QSB 4.5	4.5L
SV216	110 (148)	Cummins QSB5.9-C155	5.9L
SV216	110 (148)	Cummins QSB 4.5	4.5L
CRAWLER DOZERS			
550H	50 (67)	CDC 4-390	3.9L
550H	52 (70)	CDC 4T-390	3.9L
550L	55 (74)	FPT 432T/M3	3.2L
650K	55.8 (74.8)	NEF 445T/M2	4.5L
650L	60 (81)	NEF 445TA/E3	4.5L
750K	60 (81)	NEF 445T/M2	4.5L
750L	67 (90)	NEF 445TA/E3	4.5L
850K	72(96)	NEF 667T/M2	6.7L
850L	74 (99)	NEF 667TA/E3	6.7L
1150H	89 (119)	CDC 6T-590	5.9L
1150K	97 (130)	NEF 667TA/E3	6.7L
1650K	104 (140)	Cummins 6BTA-5.9	5.9L
1650K	116 (156)	NEF 667TA/E3	6.7L
1850K	134 (180)	Cummins 6CTAA-8.3	8.3L
1850 XLF	145 (195)	NEF 667TA/E3	6.7L
1850K	157 (211)	NEF 667TA/E3	6.7L
EXCAVATORS			
Compact			
CX 14	8.86 (11.9)	Yanmar 3TNE68	0.78L
CX 27B	15.9 (21.3)	Yanmar 3TNV82-A-SYB	1.33L
CX 31B	21.2 (28.4)	Yanmar 3TNV88-PYB	1.64L
CX 36B	21.2 (28.4)	Yanmar 3TNV88-PYB	1.64L
CX 50B	30.4 (40.8)	Yanmar 4TNV88-XYB	2.2L



Model	Rating kW (hp)	Engine Displacement	(Liter)
EXCAVATORS			
Tracked			
CX 75 SR	39.1 (52)	Isuzu CC 4JG1	3.1L
CX 80	39.1 (52)	Isuzu CC 4JG1	3.1L
CX 135 SR	65.6 (88)	Isuzu BB 4BG1T	4.3L
CX 130	79 (106)	CDC 4TA-390	3.9L
CX 160	79 (106)	CDC 4TA-390	3.9L
CX 160B	89 (120)	Isuzu AJ-4JJ1X	3.0L
CX 210	102.9 (138)	CDC 6TAA-5904	5.9L
CX 210B	117 (157)	Isuzu 4HK1X	5.2L
CX 225 SR	104 (141)	Isuzu 6BG1T	6.5L
CX 240	121.5 (163)	CDC 6TAA-5904	5.9L
CX 240B	132 (177)	Isuzu 4HK1X	5.2L
CX 290	142 (190)	CDC 6TAA-5904	5.9L
CX 290B	154 (207)	Isuzu 6HK1YSS	7.8L
CX 330	193 (259)	Isuzu AH 6HKIX	7.8L
CX 330	202 (271)	Isuzu AH 6HKIX	7.8L
CX 460	235 (316)	Isuzu AA-6SD1XQB	9.8L
CX 700	317 (425)	Isuzu AH6WG1X	15.7L
CX 700	317 (425)	Isuzu AH6WG1X	15.7L
CX 800	362 (486)	Isuzu 6WG1TC	15.7L
CX800	369 (495)	Isuzu 6WG1X	15.7L
FORK LIFTS			
585G	54 (73)	CDC 4-390	3.9L
586G	54 (73)	CDC 4-390	3.9L
586G Series/3	63 (85)	NEF 445T/M3	4.5L
588G	54 (73)	CDC 4-390	3.9L
588G Series 3	63 (85)	NEF 445T/M3	4.5L
LOADER BACKHOES			
580M	57 (76)	NEF 445/M2	4.5L
580M Turbo	60 (80)	NEF 445T/M2	4.5L
580M T/Series 3	63 (85)	NEF 445T/M3	4.5L
580SM	67 (90)	NEF 445T/M2	4.5L
580SM Series 3	72 (97)	NEF 445TA/E3	4.5L
580SM+	67 (90)	NEF 445T/M2	4.5L
580SM+ Series 3	72 (97)	NEF 445TA/E3	4.5L
590SM	73 (98)	NEF 445T/M2	4.5L
590SM Series 3	82 (110)	NEF 445TA/E3	4.5L
590SM+ Series 3	82 (110)	NEF 445TA/E3	4.5L

This information is provided from the best available sources. However, AERA does not assume responsibility for data accuracy or consequences of its application. Members and others are not authorized to reproduce or distribute this material in any form, or issue it to their branches, divisions, or subsidiaries, etc. at a different location, without written permission.



Model	Rating kW (hp)	Engine Displacement	(Liter)
LOADER TOOL CARRIERS			
570 MXT	54 (73)	CDC 4-390	3.9L
570 MXT Turbo	60 (80)	CDC 4T-390	3.9L
570 MXT Series 3	63 (85)	NEF 445T/M3	4.5L
MOTOR GRADERS			
845	104 (140)	Cummins 6BTAA-5.9	5.9L
845 DHP	104 (140)	Cummins QSB-6.7	6.7L
865	116 (155)	Cummins 6CTAA-8.3	8.3L
865 DHP	125 (168)	Cummins QSB-5.9	5.9L
865 DHP	141 (190)	Cummins QSB-5.9	5.9L
865 VHP	134 (180)	Cummins QSB-6.7	6.7L
885	153 (205)	Cummins 6CTAA-8.3	8.3L
885	153 (205)	Cummins QSB-6.7	6.7L
SKID STEER LOADERS			
410	38 (51)	ISM N844L	2.2L
410 Series 3	44 (59)	ISM N844LT	2.2L
420	44 (58)	ISM N844LT	2.2L
420 Series 3	55 (74)	FPT 432T/M3	3.2L
430	60 (80)	NEF445/M2	4.5L
430 Series 3	61 (82)	FPT 432T/M3	3.2L
435	58 (78)	NEF 334T/M2	3.4L
435 Series 3	61 (82)	FPT 432T/M3	3.2L
440	66 (89)	NEF 445T/M2	4.5L
440 Series 3	67 (90)	NEF 445T/M3	4.5L
445	60 (80)	NEF 445/M2	4.5L
445 Series 3	61 (82)	FPT 432T/M3	3.2L
450	66 (89)	NEF 445T/M2	4.5L
450 Series 3	67 (90)	NEF 445T/M3	4.5L
465	66 (89)	NEF 445T/M2	4.5L
465 Series 3	67 (90)	NEF 445T/M3	4.5L

This information is provided from the best available sources. However, AERA does not assume responsibility for data accuracy or consequences of its application. Members and others are not authorized to reproduce or distribute this material in any form, or issue it to their branches, divisions, or subsidiaries, etc. at a different location, without written permission.